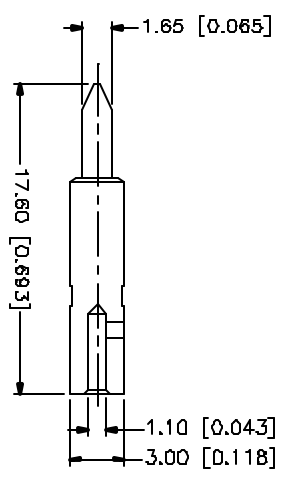
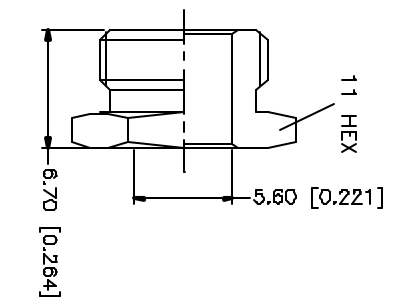
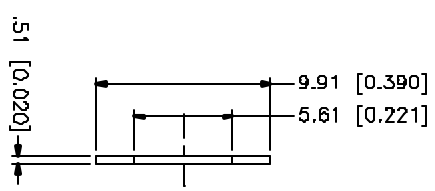
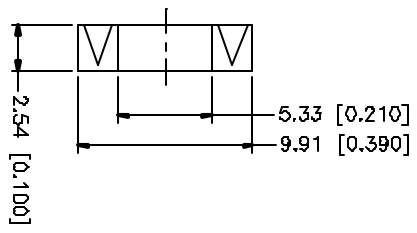
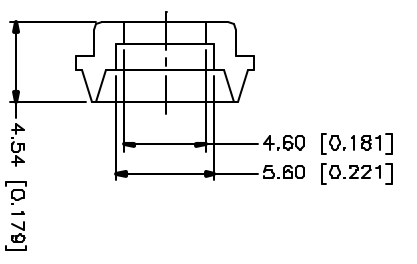
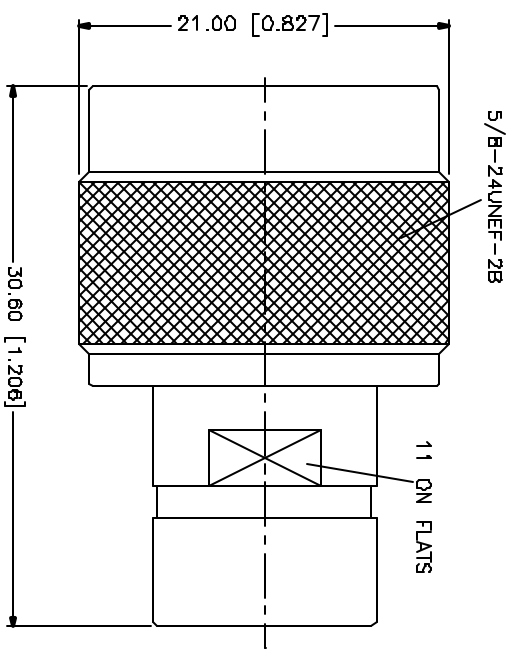
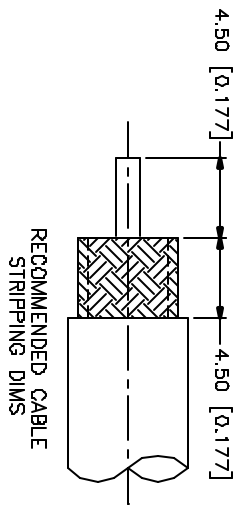


REV.	DATE	DESCRIPTION
A	08/28/00	REVISE OLD PRINT
B	05/30/04	UPDATE DRAWING FORMAT



NOTE:  
1. CRIMPED CONTACT PIN\*  
HEX CRIMP SIZE .100\*  
OR SOLDER.

QTY	FINISH	MATERIAL	DESCRIPTION
1	NEXCOTE	BRASS	HEX NUT
1	NEXCOTE	BRASS	WASHER
1	RED	SILKLINE	GASKET
1	NEXCOTE	BRASS	BRAND CLAMP
1	NATURAL	TEFLON	INSULATOR
1	NEXCOTE	BRASS	BODY/SHELL

UNLESS OTHERWISE SPECIFIED, DIMENSIONS ARE IN INCHES AND FOR DIMENSIONS IN MILLIMETERS, TOLERANCES FOR MILLIMETERS ARE: A - .05 - .81mm ± 0.20mm B - .81mm - 1.27mm ± 0.40mm C - 1.27mm - 1.78mm ± 0.50mm UNLESS OTHERWISE SPECIFIED, TOLERANCES FOR INCHES ARE: .020 - .312 ± 0.007* .315 - 1.180 ± 0.016* 1.180 - 4.724 ± 0.020* DO NOT SCALE DRAWING
---

APPROVALS	DATE
DRAWN G.R.S.	05/30/04
CHECKED	
REBLED	
SHEET 1 OF 1	

PART DESCRIPTION	PART NO.
N CLAMP PLUG (FOR RG-58C/U, 58/U, 142A/U, 223/U CABLE)	172111

DWG. NO.	REV.	SIZE	SCALE
C:/172/172111.DWG	B	A	NA

**Amphenol Connex**